

# General Motors Worldwide Facility Group

## Lansing Grand River Assembly

### General Assembly and Body Shop Expansion

**CONTRACT VALUE** \$4,000,000

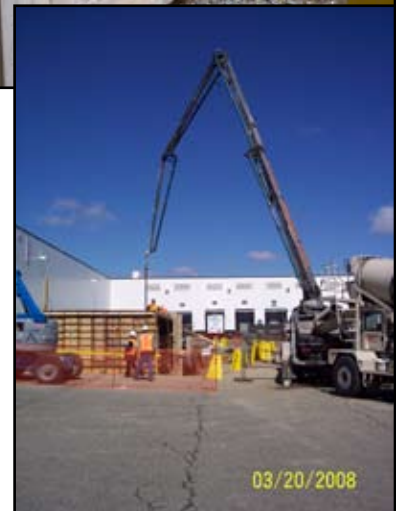
**PROJECT SIZE** 2-Bay Addition: 5,000 s.f.  
5-Bay Addition, 12,500 s.f.

**TYPE OF CONTRACT** Design/Build  
Construction Management  
General Contractor

**OWNER CONTACT** Jay Youngquist,  
GM Senior Project Manager  
517.885.7688

**ARCHITECT** SSOE, Philip Garcia Jr. AIA  
248.643.2072  
1050 Wilshire Dr., Suite 260  
Troy, MI 48084

**COMPLETED** November 2007 - September 2008



#### SCOPE OF PROJECT

There were two separate building additions required for the implementation of the building expansions at Lansing Grand River Assembly. The first was a two-bay addition to the east side of the General Assembly area. The second, a five-bay addition to the southwest corner of the Body Shop which includes the design of four new truck dock stations with three truck docks and associated dock equipment, one 14' x 16' roll-up door and a rack dry-off area. All building bay additions have new utility, ventilation, lighting and fire protection coverage similar to existing building space.

3D modeling was used to demonstrate the facility and utility infrastructure, and to demonstrate how the new additions would interface with the existing building and mechanical/electrical systems. This value-added feature was critical in designing the intricate routing of utilities between new and existing building components in the two facilities, helping to eliminate potential interferences. The structural, mechanical and electrical subcontractor's models were integrated into the finished model, and potential interferences were resolved in the computer model prior to the fabrication of building components. The continuously-evolving model served as a consistent reference and resource for the weekly project coordination meetings between General Motors, Sorensen Gross, SSOE and the major building system subcontractors.



**Sorensen Gross**  
**Construction Services**

*success through partnership*

Copyright © 2008  
Sorensen Gross Construction Services